

CST – Technical Drawing and
D.C.G

T020

Thursday, 30/11/2017
08:30 – 11:30 AM

WORKFORCE DEVELOPMENT AUTHORITY



P.O. BOX 2707 Kigali, Rwanda Tel: (+250) 255113365

**ADVANCED LEVEL NATIONAL EXAMINATIONS, 2017,
TECHNICAL AND PROFESSIONAL TRADES**

EXAM TITLE: TECHNICAL DRAWING AND D.C.G

OPTION: Construction (CST)

DURATION: 3 hours

INSTRUCTIONS:

The paper is composed of **three (3) main Sections** as follows:

Section I: Fifteen (15) compulsory questions. 55 marks

Section II: Attempt any three (3) out of five questions. 30 marks

Section III: Attempt any one (1) out of three questions. 15 marks

The use of drawing materials is recommended.

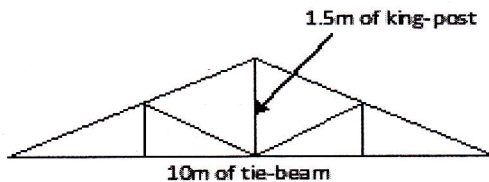
Note:

Every candidate is required to carefully comply with the above instructions. Penalty measures will be applied on their strict consideration.

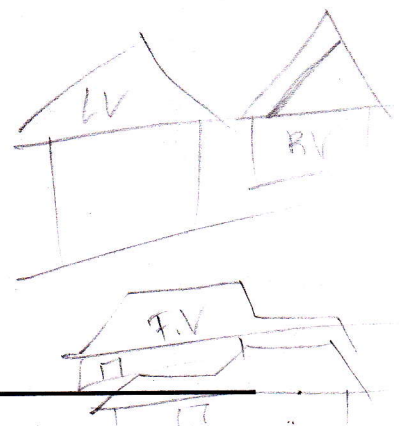
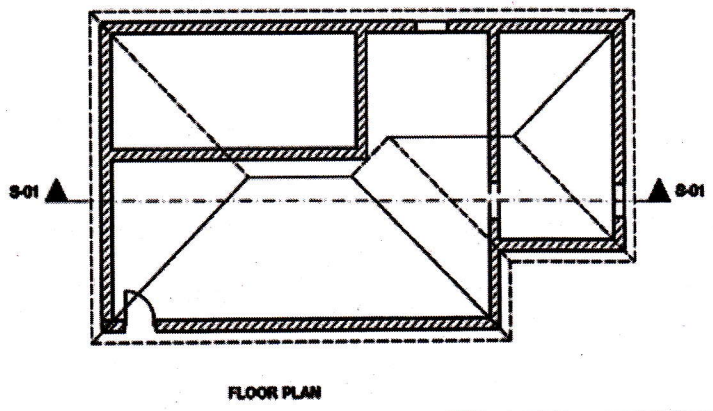
Section I. Fifteen (15) Compulsory questions

55 marks

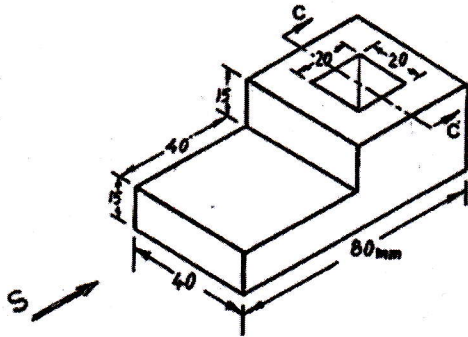
- 01. List down any six informations that should be found in a title block. **3 marks**
- 02. What are the sizes of the drawing paper from A0 to A 4 Formats ? **5 marks**
- 03. Explain any three elements of dimensions. **3 marks**
- 04. Give one example of : full size scale, reducing scale, and enlarging scale respectively. **3 marks**
- 05. A line of 5cm is drawn on the drawing paper to represent the actual length of 10mm show the type of scale in calculating R.F of scale. **3 marks**
- 06. Use the convention symbols in section materials to show : Mass concrete, Brick work, and Block work. **3 marks**
- 07. State the function of site plan. **3 marks**
- 08. For 40% slope of a roof truss and king post of 2.5m, calculate the length of tie-beam of triangle truss required. **5 marks**
- 09. For the sketch of truss below ; show its slope in **degrees** and in **percentage**. **3 marks**



- 10. Highlight the three principles of dimensioning. **3 marks**
- 11. Explain the types of pictorial projection. **3 marks**
- 12. What is meant by (a) floor plan and (b) section of a house ? **4 marks**
- 13. Outline the steps of drawing a floor plan. **4 marks**
- 14. From the following figure, draw its views (**F.V; B.V; R.S.V; L.S.V**) by sketching be concentrated on shape instead of size. **4 marks**



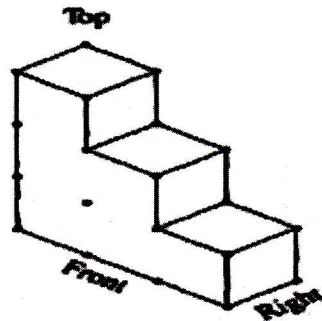
15. Draw the front view, right side view, top view from the direction (S) and the sectional view C – C, for the given objects by respecting the dimensions in mm. **6 marks**



Section II. Choose and answer any three (3) questions.

30 marks

16. Discuss the four stages followed in drawing. **10 marks**
17. An area of 250cm^2 was measured on plan, using a planimeter. Given that the plan scale is 1:500, calculate the ground area in m^2 . **10 marks**
18. Based on the figure, sketch the views asked below :
- i) Top view ii) Front view iii) right view



marks

10

19. A. Distinguish the following statements, showing which are correct and the ones which are false.

- ★ When the cutting plane is perpendicular to the axis and cuts all the generations of a cone, the section obtained is an Ellipse
- ★ The front view is obtained when an object is projected on vertical plane
- ★ When a line is parallel to HP it will not have H.T
- ★ When a line is parallel to VP it will not have V.T
- ★ The shorter distance between two points is called a circle
- ★ Isometric drawing is also known as isometric view.

B. Copy the sentences below and fill in the blanks with suitable word.

- ❖ The abbreviation BIS stands for.....
- ❖ The abbreviation ISO stands for.....
- ❖ is the study of construction of geometric figures having two dimensions.
- ❖ is used as the profile of a gear tooth. **10 marks**

20. A) Explain the terms mentioned here below :

- a. Object line
- b. Hidden feature line
- c. The center line
- d. The leader

B) Classify the styles of freehand lettering. **10 marks**

Section III. Choose and answer any one (1) question. 15 marks

21. By layout, draw a floor plan of small private dwellings (4.80m x 9.30m) gable roof 1 Bedroom with 2 windows, 1 living room with 2 opposite windows. Main entrance of single door, and Overhang is 40 Cm. Make all dimensions by general principles on floor plan, the scale is 1:100. Calculate the number of sheet cover of 2,50m of length and 80cm for width (**NB:** overlap in all sides when covering the roof has to be ignored, and the slope of the roof is 30%). **15 marks**

22. In drawing, represent the lines below as it is requested.

- (a) Visible line
- (b) Hidden line
- (c) Section line
- (d) Center line
- (e) Dimension & Extension lines
- (f) Cutting- plane & viewing- plane line
- (g) Short – break line

15 marks

23. With free hand drawings show the different types of windows hung.

15 marks